



## Crossover 2.0 Dryer Stacking Instructions

### **Applicable Models:**

**DLHS0817E DLHS0817G**

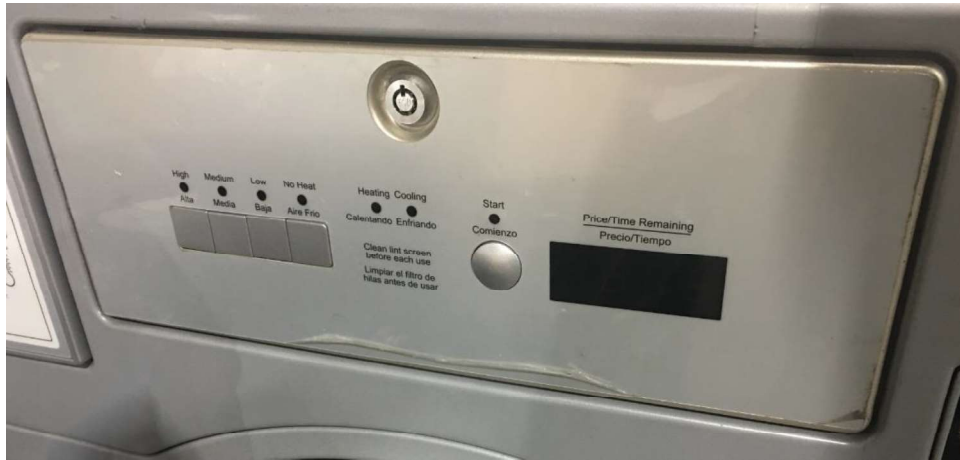
### *Caution:*

*Follow the instructions in the Installation and Operating manual to properly install and operate the machines.*

*When stacked units are installed, it is advised to tether the top machine to the wall behind the units, to avoid tipping over. A tethering kit is available as an optional part. Contact your distributor for more information. Dryer stacking installation is recommended to be done by 2 people.*

## Stacking an Crossover 2.0 Bottom-Control Dryer (DLHS) over a Crossover 2.0 Top-Control Dryer (DLHF)

### Demount the top panel of the Top Control Dryer



1. Demount the control panel by using the provided service key. Disconnect the cables between the control module, and the machine, and set the control module aside.



2. Disassemble the front control panel by removing the four screws shown



3. Remove 2 screws from the front of the top panel



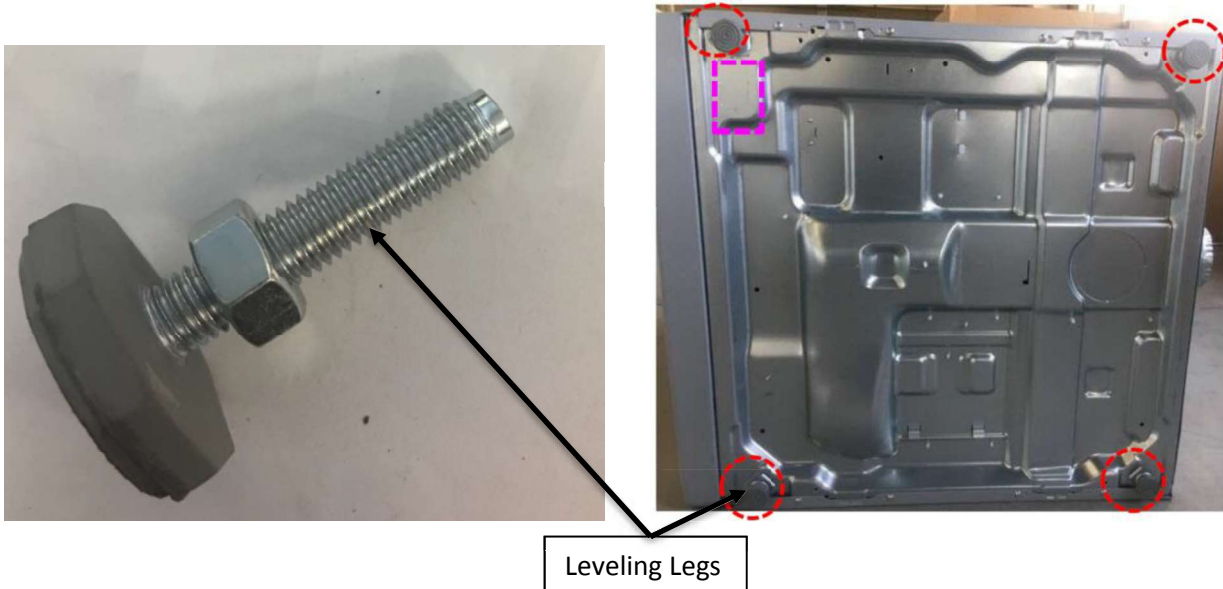
4. Remove the 2 top panel screws from the tabs in the back of the machine.
5. Slide the top panel rearward and lift to remove the top panel from the machine



6. The disassembly process is similar for the bottom-control machine, except instead of removing the control panel remove the two screws from the front top blank panel and demount the panel
7. Swap the TOP panels between the top-and-bottom-control machines

**After swapping the TOP panels**

8. Adjust the feet on the Top Control machine, to level it according to the intended installation position and remove the drum contents from the bottom-control dryer.
9. Flatten a machine carton, and tilt the bottom-control dryer on one of its sides on the carton



Leveling Legs

10. From the bottom control machine, remove the rectangular knock-out plate, as indicated in the picture using a hammer and screw driver.
11. Also, remove the four leveling legs from the base panel of the machine.

13. Remove the screw (circled in the photo) from the raised part of the right-front stacking bracket on the bottom dryer's top panel, and retain it for later use (Step 15)



12. Loosen slightly, but do not remove, the 4 shouldered screws that are already attached to the base panel of the top dryer (circled in the photo)



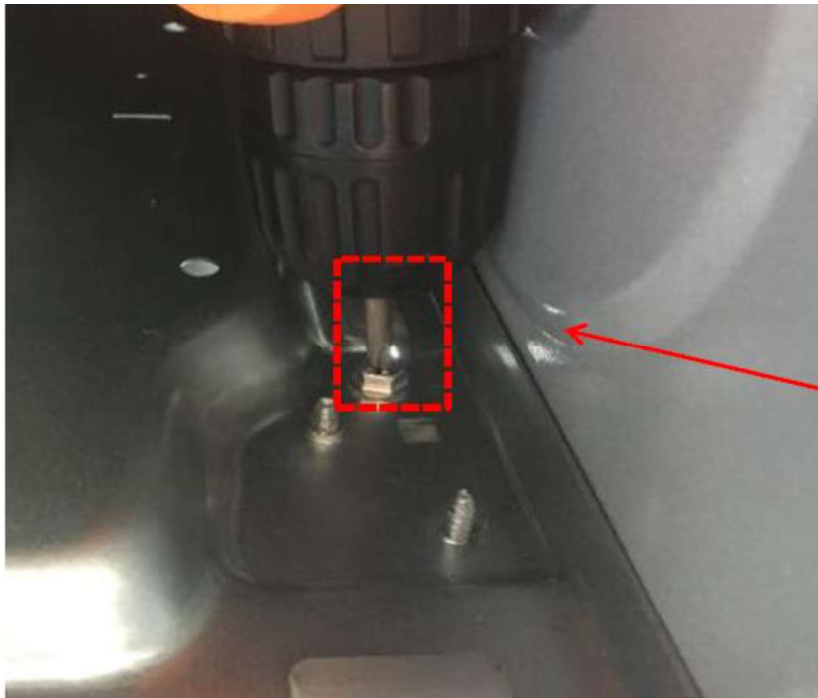
13. Remove the screw (circled in the photo) from the raised part of the right-front stacking bracket on the bottom dryer's top panel, and retain it for later use (Step 15)

14. Stack the bottom-control machine (DLHS) onto the top-control machine (DLHF). The four shouldered screws in the base panel of the top dryer must slide into the open back side of the stacking-brackets on the top panel of the bottom machine. Apply force to the top machine from the rear until the fronts of the top and bottom machines are aligned. Note: Gently tapping the lower part of the back of the top-mounted dryer with a hammer and block of wood can help to align the machines.
15. Once the machines are securely stacked, open the control panel of the top machine (bottom-control machine) (DLHS) using the provided service key

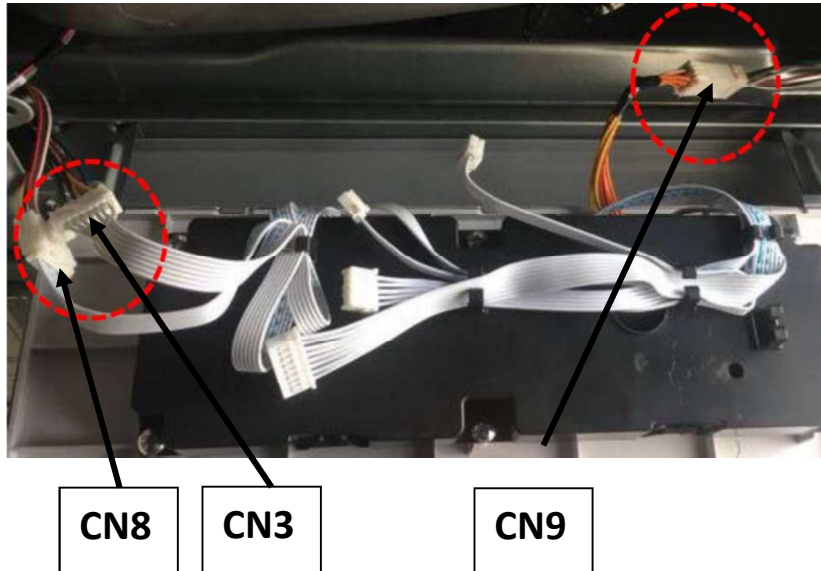


Cross frame

16. Remove the control panel frame and cross frame



17. Install and tighten the locking-screw that was taken from the stacking bracket in step 12 back into the bracket through the clearance hole provided in the base of the top dryer.
18. Re-assemble the control console of the top machine and re-connect the CN8 and CN3 connectors of the control board back to machine.



19. Route the extended wiring harness from the CN 9 connections through the hole in the base panel of the bottom control machine (*see step 9*) and connect the coin meter connector (Red, White and Blue wires) to the “TOP” assigned meter of the dual coin connections of the Top Control Machines.



20. Once the connections are properly made, mount back the control panel frame and the cross frame.
21. Before remounting the control, panel reconnect the harness connections.
22. Lock the controller using the service key.

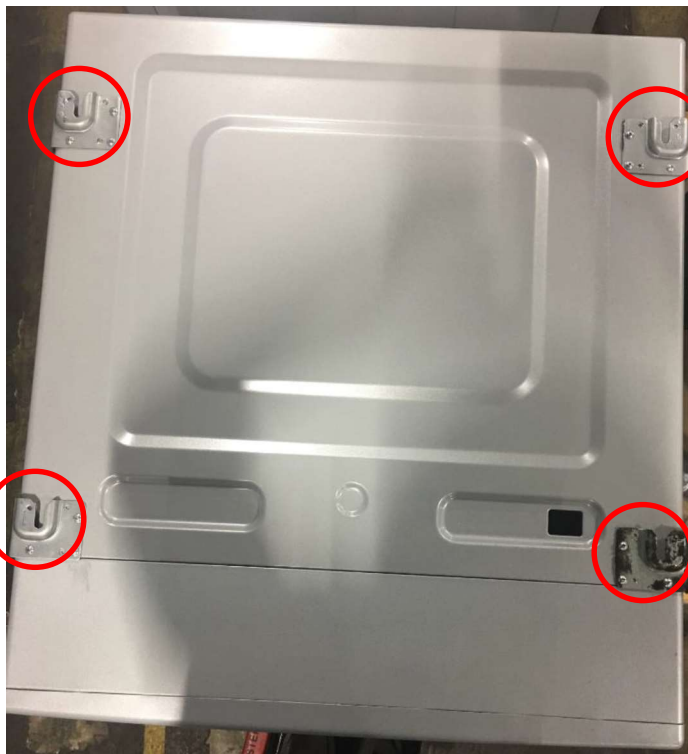
### **Stacking a Crossover 2.0 bottom control dryer (DLHS) on the Crossover 2.0 washer (WHLFP)**

Additional Item Needed: Washer Top Panel for Dryer Mounting (Part Number: 002089423F)

#### **Attaching the brackets to the Washer Top Panel**

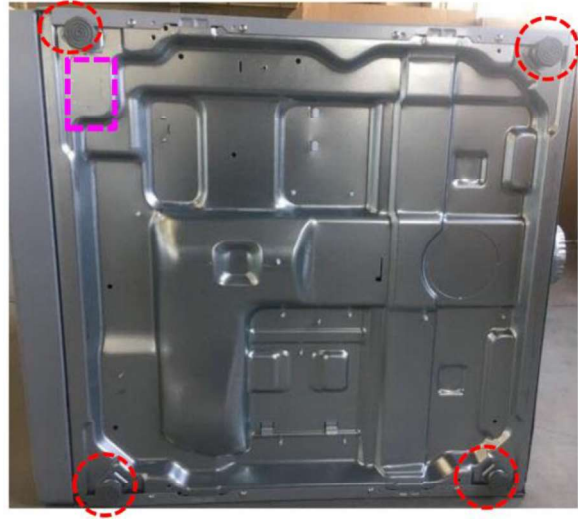
The washer top panel for dryer mounting (**0020809423F**) does not come with the stacking brackets attached. The panel has a total of 12 tapped holes, 3 in every corner for attaching the stacking brackets.

1. Remove the stacking brackets from the top panel of the bottom control dryer (DLHS).
2. Mount the stacking brackets on the new washer top panel (Part Number: **0020809423F**).
3. Then remove the already installed top panel from the washer and replace it with the Top Panel (**0020809423F**) with the attached brackets.



#### **After assembling the Top Panel (0020809423F) on the Washer (WHLFP)**

4. After placing the washer in the intended installation position, level the washer as per installation manual.
5. Flatten a machine carton, and tilt the bottom-control dryer on one of its sides on the carton



6. From the bottom control machine, remove the rectangular knock-out plate, as indicated in the picture using a hammer and screw driver.
7. Also, remove the four leveling legs from the base panel of the machine.



8. Loosen slightly, but do not remove, the 4 shouldered screws that are already attached to the base panel of the top dryer (circled in the photo)

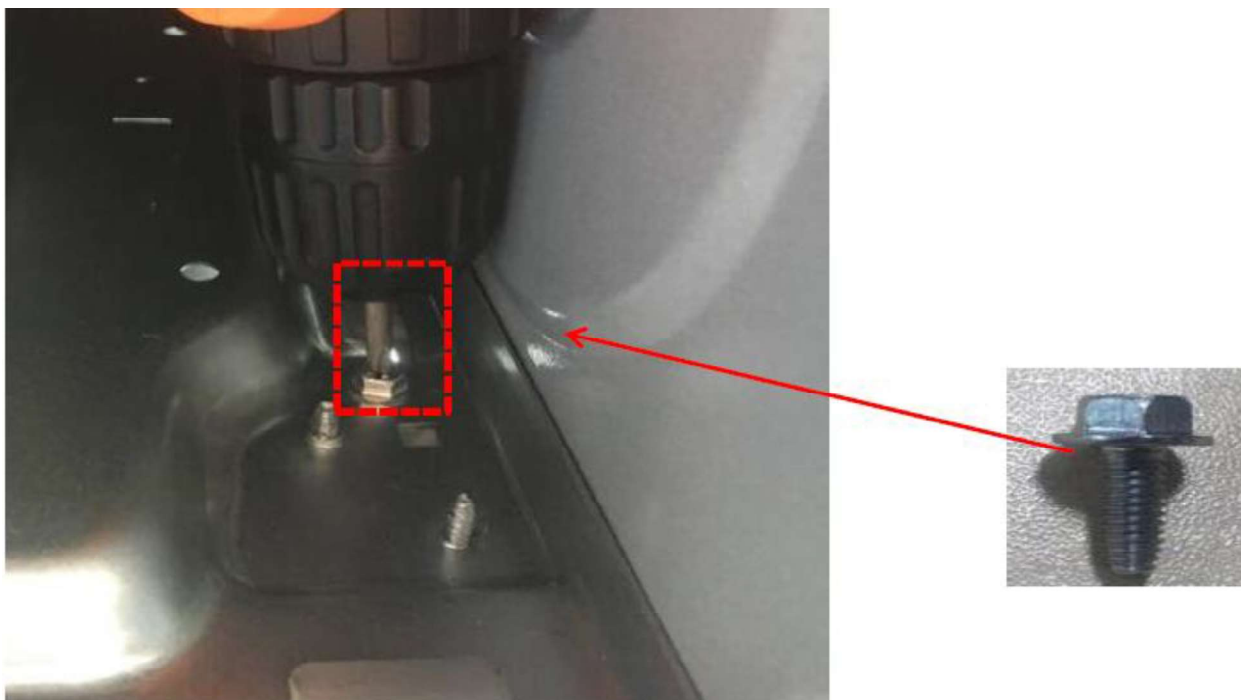


9. Remove the screw (circled in the photo) from the raised part of the right-front stacking bracket on the bottom dryer's top panel, and retain it for later use (Step 15)
23. Stack the bottom-control machine (DLHS) onto the Crossover Washer. The four shouldered screws in the base panel of the top dryer must slide into the open back side of the stacking-brackets on the top panel of the bottom machine. Apply force to the top machine from the rear until the fronts of the top and bottom machines are aligned. Note: Gently tapping the lower part of the back of the top-mounted dryer with a hammer and block of wood can help to align the machines.
24. Once the machines are securely stacked, open the control panel of the top machine (bottom-control machine) (DLHS) using the provided service key

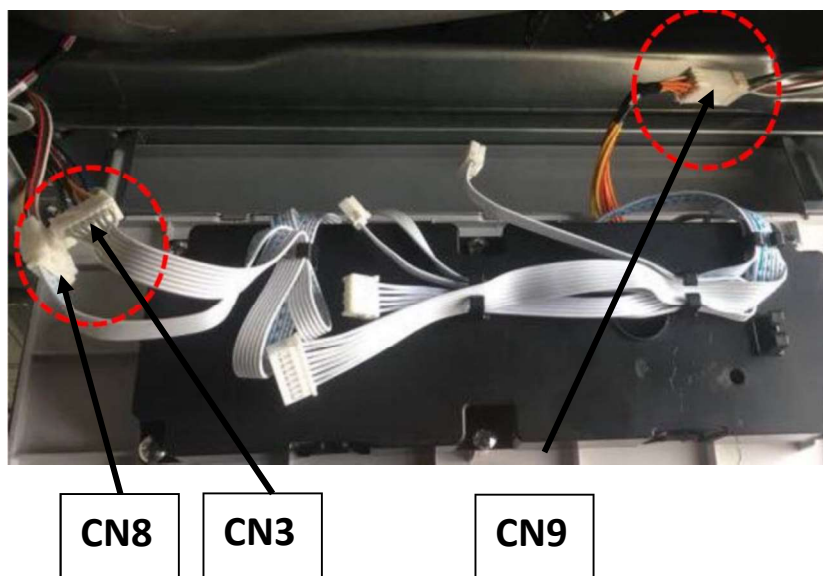


Cross frame

25. Remove the control panel frame and cross frame



10. Install and tighten the locking-screw that was taken from the stacking bracket in step 12 back into the bracket through the clearance hole provided in the base of the top dryer.
26. Re-assemble the control console of the top machine and re-connect the CN8 and CN3 connectors of the control board back to machine.



27. Route the extended wiring harness from the CN 9 connections through the hole in the base panel of the bottom control machine (*see step 9*) and connect the coin meter connector (Red,

White and Blue wires) to the “TOP” assigned meter of the dual coin connections of the Top Control Machines.

28. Once the connections are properly made, mount back the control panel frame and the cross frame.
29. Before remounting the control, panel reconnect the harness connections.
30. Lock the controller using the service key.